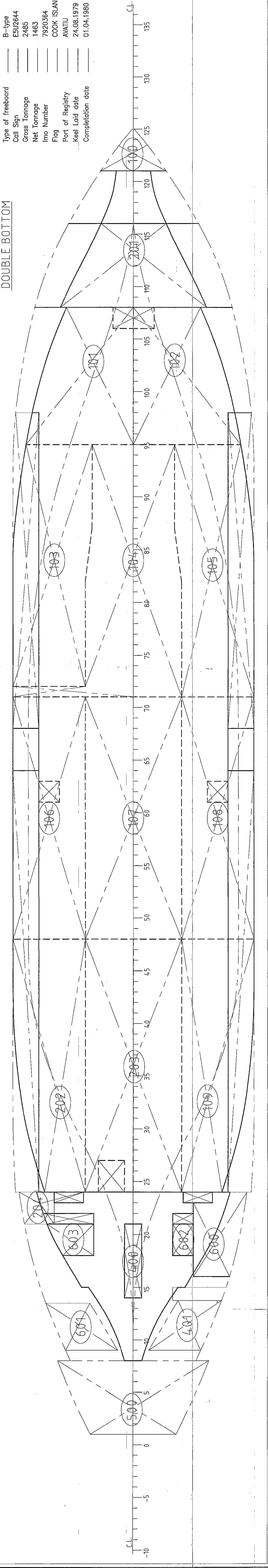
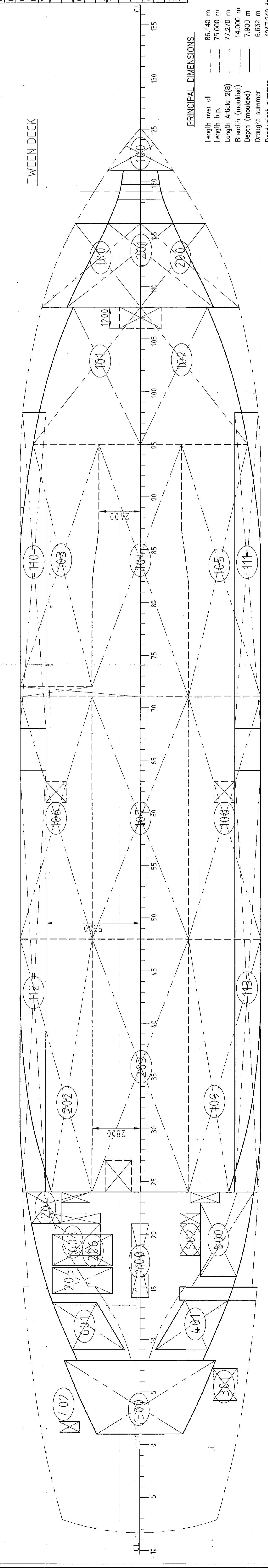
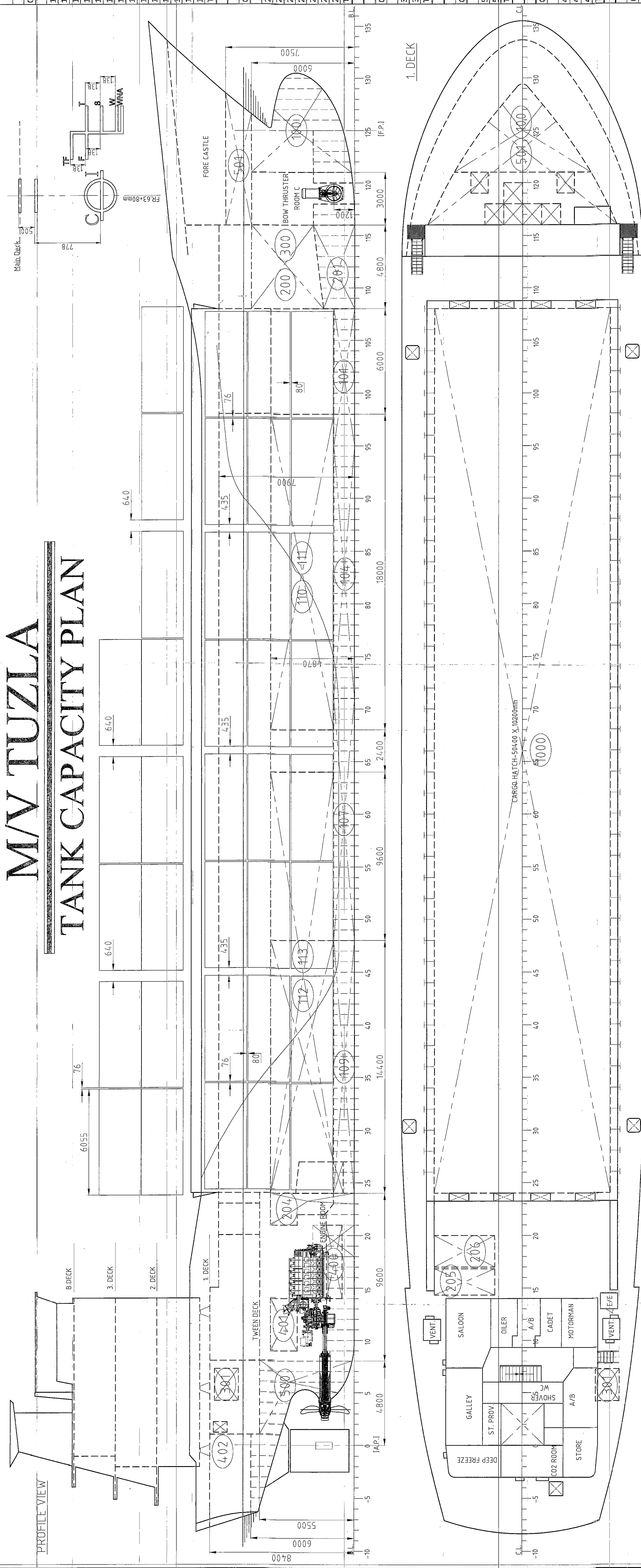


M/V TUZLA

TANK CAPACITY PLAN



PRINCIPAL DIMENSIONS

- Length over all: 86,140 m
- Length b.a.: 75,000 m
- Length Amidships (2/8): 77,270 m
- Breadth (moulded): 14,000 m
- Depth (moulded): 7,900 m
- Draught summer: 6,632 m
- Draughtlight summer: 4,242,250 tonnes
- Displacement summer: 55,028,000 tonnes
- Type of Freeboard: B-1
- Code: 2484
- Gross Tonnage: 1463
- Net Tonnage: 792,0364
- IMO Number: 7920364
- Flag: COOK ISLANDS
- Port of Registry: AWANU
- Keel Laid date: 24.08.1979
- Completion date: 01.04.1980

Compartment	Category Hfo - Ballast (SG = 1.025 tonnes/cu.m 100% full)				IT		
	Frames	Volume (m³)	Weight (t)	TCG (m)			
100: Fore Peak Lower Tk.C	121-130	41,300	42,332	74,641	0.000	3,431	9
101: Double Bottom Ballast Tk.2P	95-108	40,900	41,973	60,467	2,367	0,653	90
102: Double Bottom Ballast Tk.3P	95-108	40,900	41,973	60,467	2,367	0,653	90
103: Double Bottom Ballast Tk.3P	72-95	64,000	65,600	49,915	-4,565	0,643	85
104: Double Bottom Ballast Tk.3C	71-95	93,400	95,735	49,377	-11,511	0,614	232
105: Double Bottom Ballast Tk.3P	71-95	66,400	68,060	49,607	-4,577	0,624	88
106: Double Bottom Ballast Tk.4C	48-71	66,500	68,162	35,680	-4,833	0,624	83
107: Double Bottom Ballast Tk.4C	48-71	93,000	95,325	35,700	0.000	0,614	197
108: Double Bottom Ballast Tk.4S	48-71	66,500	68,162	35,680	4,833	0,624	83
109: Double Bottom Ballast Tk.5S	24-48	56,500	57,912	22,588	4,597	0,653	68
110: Side Ballast Tk.3P	68-98	89,800	92,045	49,303	-6,210	3,690	4
111: Side Ballast Tk.3S	68-98	89,800	92,045	49,303	-6,210	3,690	4
112: Side Ballast Tk.5P	24-64	117,600	120,540	27,444	-6,223	3,100	6
113: Side Ballast Tk.5S	24-64	117,600	120,540	27,444	-6,223	3,100	6
Total		1044,200	1070,305	41,922	0,247	1,721	1045

Compartment	Category Hfo - Fuel Oil (SG = 0.950 tonnes/cu.m 100% full)				IT		
	Frames	Volume (m³)	Weight (t)	TCG (m)			
200: Fuel Oil Deep Tk.1S	108-116	65,800	59,220	66,981	2,404	4,167	54
201: Double Bottom Fuel Oil Tk.1C	108-116	51,800	46,670	66,981	0.000	1,230	125
202: Double Bottom Fuel Oil Tk.1S	24-48	57,000	52,568	44,597	-4,597	0,653	68
203: Double Bottom Fuel Oil Tk.1S	24-48	57,000	52,568	44,597	-4,597	0,653	68
204: Fuel Oil Overflow Tk.1P	21-24	6,500	6,850	13,692	5,681	3,355	5
205: Fuel Oil Daily Tk.1DP	14-17	7,600	6,840	9,350	-3,189	6,826	5
206: Fuel Oil Daily Tk.1SP	17-20	9,100	8,150	11,000	-3,189	6,826	6
Total		290,800	261,720	39,352	-0,647	1,582	459

Compartment	Category Mdo - Diesel Oil (SG = 0.870 tonnes/cu.m 100% full)				IT		
	Frames	Volume (m³)	Weight (t)	TCG (m)			
300: Diesel Oil Deep Tk.1P	108-116	65,800	57,246	66,981	-2,404	4,167	54
301: Diesel Oil Daily Tk.1BS	04-07	2,600	2,314	3,420	4,809	7,537	0
Total		68,400	59,560	64,511	-2,123	4,298	54

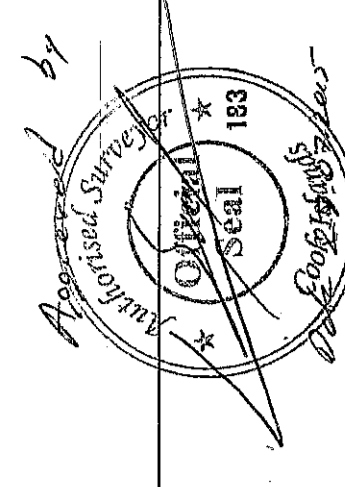
Compartment	Category Fw - Fresh Water (SG = 1.000 tonnes/cu.m 100% full)				IT		
	Frames	Volume (m³)	Weight (t)	TCG (m)			
500: After Peak Fresh Water Tk.1SC	01-08	33,200	33,200	3,203	0.000	4,758	129
501: Upper Fore Peak Tk.2C	116-129	40,500	40,500	72,482	0.024	6,516	238
Total		73,700	73,700	41,274	0,013	5,944	367

Compartment	Category Lo - Lub Oil (SG = 0.900 tonnes/cu.m 100% full)				IT		
	Frames	Volume (m³)	Weight (t)	TCG (m)			
400: Lub Oil Circulation Tk.14C	14-21	3,800	3,420	10,500	0.000	1,150	0
401: Lub Oil Storage Tk.22S	09-14	7,300	6,570	6,797	2,661	4,233	5
402: Lub Oil Gear Tk.19P	01-02	0,570	0,513	1,010	-4,090	7,800	0
Total		11,670	10,503	17,307	-1,465	3,404	5

Compartment	Category Mis - Other (SG = 1.000 tonnes/cu.m 100% full)				IT		
	Frames	Volume (m³)	Weight (t)	TCG (m)			
600: Bilge Water Holding Tk.8S	16-24	24,300	24,300	12,488	4,505	3,408	6
601: Sewage Tk.11P	09-14	7,300	7,300	6,726	-2,672	4,234	5
602: Dirty Oil Tk.16S	18-21	3,700	3,700	11,762	2,850	1,550	0
603: Sludge Tk.17P	18-21	5,000	5,000	11,813	-3,124	1,661	1
Total		40,300	40,301	11,294	2,116	3,170	12

Compartment	Category Hold - Hold Grain Capacity				IT		
	Frames	Volume (m³)	Weight (t)	TCG (m)			
100: Hold	24-108	4772,400	16853,534	38,543	-0,010	5,412	759
Total		4772,400	16853,534	38,543	-0,010	5,412	759

Compartment	Category Hold - Hold Bulk Capacity				IT		
	Frames	Volume (m³)	Weight (t)	TCG (m)			
100: Hold	24-108	4586,000	16195,004	38,600	0.000	5,864	759
Total		4586,000	16195,004	38,600	0,000	5,864	759



KUZEY NAVAL ARCHITECTURE
 Kuzey Naval Architecture & Marine Engineering
 Mada Ina Wabaa, Gadeeb Salalad Kari 5-6 Gadeeb (KOCU)
 Mada Ina (8048 581 81 87)
 Email: info@kuzeynaval.com / info@kuzeynaval.com / info@kuzeynaval.com

TANK ARRANGEMENT & CAPACITY PLAN

SCALE: 1/100

OWNER: GORDON STONE MARINE LTD. Hull No. 204

DESIGNER: KUZUY NAVAL ARCHITECTURE Ltd. Hull No. 204

DATE: 24.08.2015

DESIGNED BY: FEHRI YILMAZ

CHECKED BY: FEHRI YILMAZ

APPROVED BY: KM-TP-2000

DATE OF SHEET: 01.04.1980

DATE OF SHEET: 01.04.1980

Sheet: CP-11